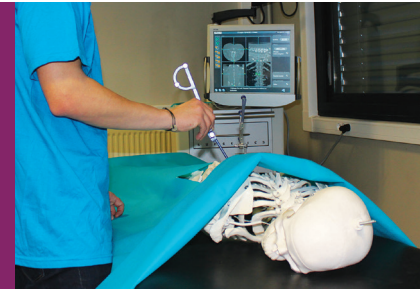




Graduates in Health Information Technology (HIT) possess a multidisciplinary skillset encompassing IT instrumentation and healthcare-specific knowledge. They are able to analyze medical and healthcare system needs, bridge the gap between health specialists and IT engineers, and design information systems and software for healthcare, clinical/preclinical research and medical devices. Our HIT engineers are uniquely qualified to run outsourced health information systems and instrumentation projects.



Our graduates possess solid general engineering skills

- A capacity to use resources from a broad range of basic sciences
- Knowledge and understanding of a specialty scientific and technical field
- Mastery of engineering tools and methods
- An ability to work within an organization, manage a team, and implement change
- Understanding of broader industrial, financial, and professional issues
- A capacity to work in international settings
- Respect for societal values

Recent graduates have secured positions like:

- HIT engineering consultant
- Medical Device R&D engineer
- HIT development engineer
- In-house HIT manager at hospitals and other healthcare facilities

Graduates have mastered specific competencies that prepare them to handle real-world professional situations:

Competency	Situation
Understanding healthcare system user needs	<ul style="list-style-type: none"> • Drawing up formal specifications based on user needs to design a healthcare system • Drawing up formal requirements for the development and maintenance of a health care system • Providing recommendations for specific healthcare system solutions
Designing and implementing information systems for health-care and clinical/preclinical research and medical devices	<ul style="list-style-type: none"> • Implementing a Health Information System • Developing a medical device • Providing support on medtech innovation projects
Managing a project and interacting with the prime contractor on Health Information System (HIS), medical devices, and clinical/preclinical research projects	<ul style="list-style-type: none"> • Implementing and integrating HIS solutions • Managing interoperability • Integrating a medical device into a healthcare or clinical/preclinical research system • Planning and managing complex projects
Understanding the social, economic, and legal/regulatory context unique to healthcare	<ul style="list-style-type: none"> • Making recommendations to improve a healthcare system based on health and demographic data • Providing support for the implementation of a healthcare network or new HIS • Managing socioeconomic activity
Communicating about and promoting his/her projects	<ul style="list-style-type: none"> • Understanding the relationships between complex ideas and distilling them into clear, simple messages • Presenting conclusions and recommendations

In-company placements:

Third year: optional placement

Fourth year: 12 weeks

Fifth year: 22 weeks

Graduation project: 2 months for external customers (companies or research labs)

A selection of companies that have hired HIT Engineering graduates:

ACETIAM, ALTRAN, DOSHAS CONSULTING, EASIS, ENNOV, ENOVACOM, MAINCARE SOLUTIONS, ORANGE BUSINESS SERVICE, PURKINJE, SOFTWAY MEDICAL, SOPRA STERIA, TECHNIDATA, WEB100T, WORLDLINE...

Academic contact

Pascale Calabrese
Head of Department
polytech-tis@univ-grenoble-alpes.fr
+33 4 76 82 79 71

Business contact

Nadine Chatti
Corporate Relations
entreprise@polytech-grenoble.fr
+33 4 76 82 79 16